



SKIS-006

REV.:

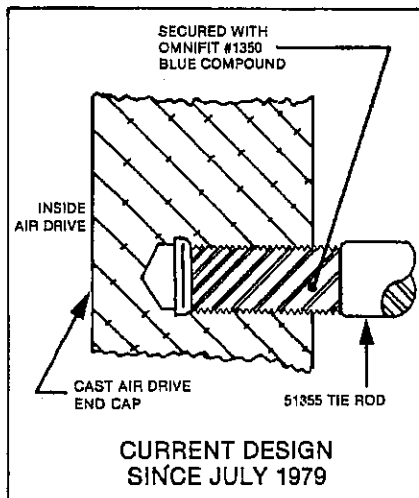
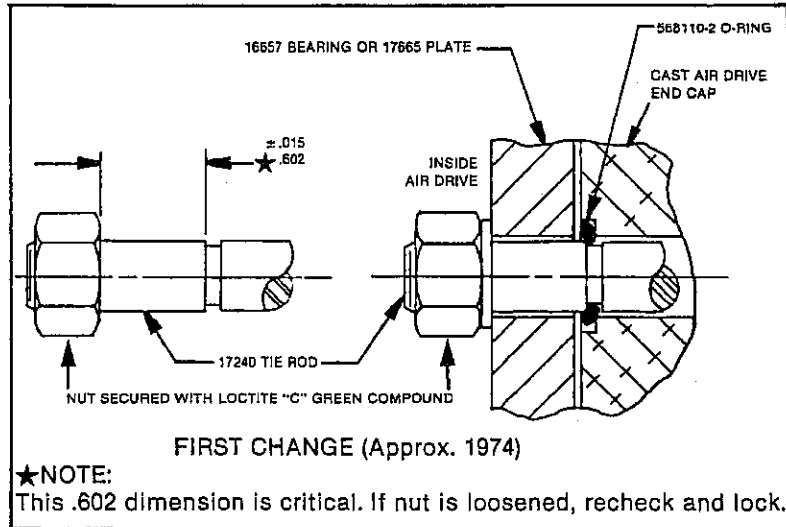
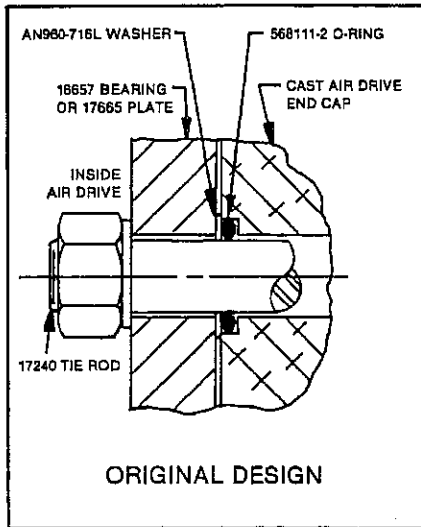
SEAL KIT INSTRUCTION SHEET

SUBJECT:

STATIC SEAL SYSTEM FOR THE INSIDE END OF TIE RODS USED TO HOLD GAS BARREL TO AIR CAP ON 5-3/4 " DRIVE GAS BOOSTERS

DESCRIPTION:

Since the introduction of the product line in the 1960's, there have been two changes as illustrated below. There are many units of all ages still in use and parts are stocked for all.



Burbank, CA 91502 • U.S.A. (818) 843-4000
TLX: 18-1372 HASKEL BUBK FAX: (818) 841-4291
Haskel Energy Systems, Ltd. • Sunderland SR5 3JD • England
91-549-1212 TLX: 53624 HIENGY G FAX: 91-549-0911

REFERENCES:

17326 29472
29255 51583
29343

2.89 .5M PRINTED IN U.S.A. 851218

Haskel

INCORPORATED

Engineered Products Division

NEWSLETTER

100 EAST GRAHAM PLACE / BURBANK, CALIFORNIA 91502 U.S.A.

August 1, 1979

Vol. XII, No. 3

TO: All Authorized Distributors, Inside Sales, and Service Personnel, Field Salesmen.

FROM: W. W. Bixby

SUBJECT: DESIGN MODIFICATION — GAS BOOSTERS

Starting with shipments approximately July 1, 1979, a very important improvement in internal construction took effect on nearly all of our Gas Booster models in the 5-3/4" drive AG Series. Those affected:

All catalog models containing dash numbers: -15, -30, -32, -62, -75, -152, -233.

The basic improvement is a new design high pressure gas barrel which now contains the low pressure air drive seals and bearings. This not only simplifies seal assembly and replacement, but also improves total booster alignment and therefore operating life.

Unfortunately this improvement was not possible without affecting a number of additional parts. Therefore to make such an important change as easy as possible to understand, enclosed you will find:

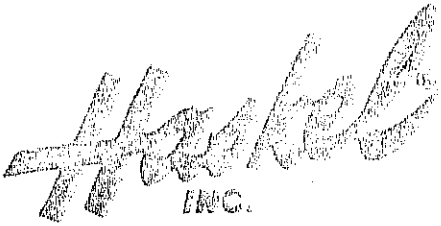
CONVERSION KIT	CATALOG MODEL AFFECTED	SOME OF THE MORE POPULAR SPECIAL ASSEMBLY NUMBERS AFFECTED
50185 SHEETS 1 & 2	ANY CONTAINING DASH NO. -15 or -32	26968, 27875, 28153, 29140, 29425, 29845
50186 SHEETS 1 & 2	ANY CONTAINING DASH NO. -30 or -62	26968, 27875, 29653, 51563
50187 SHEETS 1 & 2	ANY CONTAINING DASH NO. -75, -152, or -233	29653, 51563

We presume the drawings will be self explanatory, but if you have questions, or need more copies, let us know.

U.S. list prices on the conversion kits are:

KIT #50185
KIT #50186
KIT #50187

NOTE: It will not normally be necessary to convert an existing AG series booster — UNTIL THE GAS BARREL MUST BE REPLACED. If the gas barrel is still useable, the semi-obsolete parts or kits to fit it will still be available per prior parts sheets.



TECHNICAL BULLETIN

BURBANK, CA 91502 U.S.A. (818) 843-4000 TLX: 18-1372 HASKEL BUBK FAX: (818) 841-4291

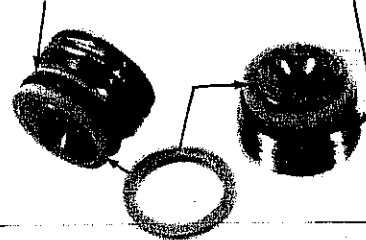
TO: Authorized Distributors
and Technical & Service Manual Holders

FROM: W.W. Bixby

SUBJECT: Gas Booster Check Valve Assemblies
5-3/4" Drive, Models -15, -30, -32, -62,
-75, -152.

February 11, 1988

54067 SEATS WITH
O-RINGS AND BACKUP RINGS



NEW 56228 PTFE RING

The problem was to keep the O-rings and backup rings from falling off the ends of the 54067 seats when screwing the seats into an end cap. (We were recommending that a slight amount of water or alcohol be used for "Glue".)

The solution for holding the parts on and eliminating any need for "Glue" is the 56228 retaining ring. This ring is square cut PTFE that fits tightly over the end of either seat and replaces the one each 17421 and 17422 backups on the outside of the 568012 O-ring.

Drawing 53632 Rev. D attached shows how it all goes together. The 56228 rings are in stock and standard in new units and seal kits beginning approximately January 25, 1988.



TECHNICAL & SERVICE BULLETIN

100 EAST GRAHAM PLACE • BURBANK, CALIFORNIA 91502 • U.S.A. • (818) 843-4000

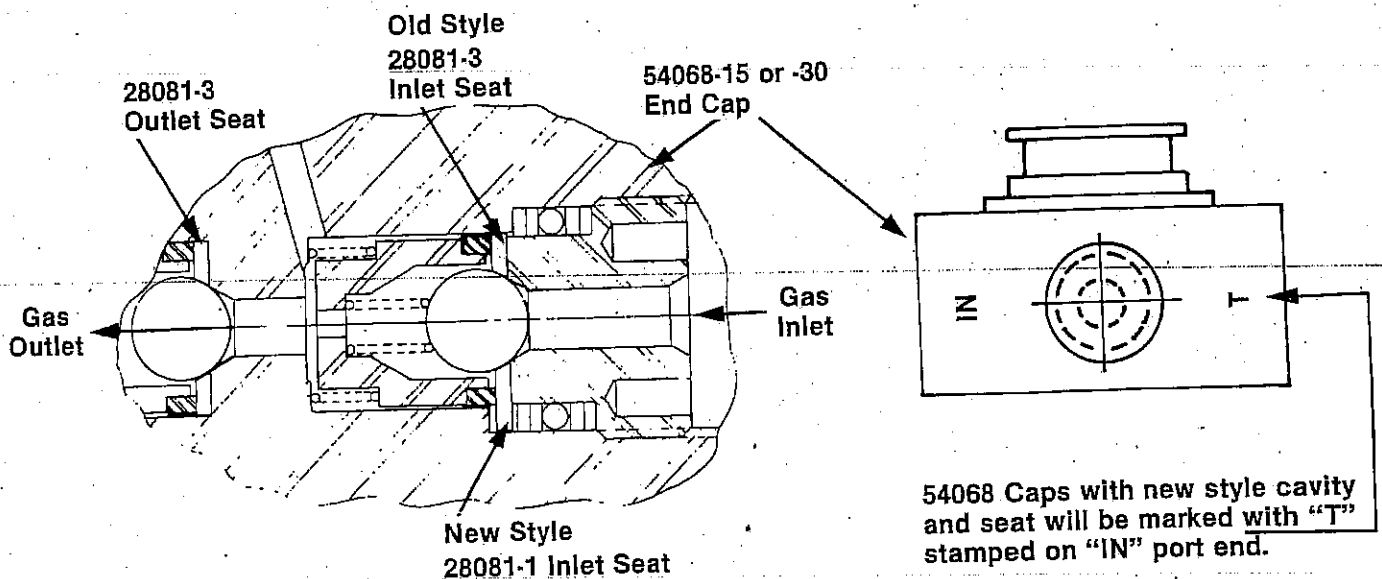
Vol. VIII, No. 1

November 29, 1985

To: All Authorized Distributors and Service Manual Holders
From: W. W. Bixby
Subject: Inlet Check Valve Seat Change — AG Series 5-3/4" Drive Gas Boosters -15, -30, -32 & -62. End Cap (P/N 54068)

Effective November 1985, a change in the inlet check cavity of these end caps has been made to make it easier to install the inlet check parts without distorting the teflon disk seat. However, this means that the 28081-1 inlet check teflon seat is now larger in O.D. than the 28081-3 outlet check teflon seat.

This change is illustrated below.

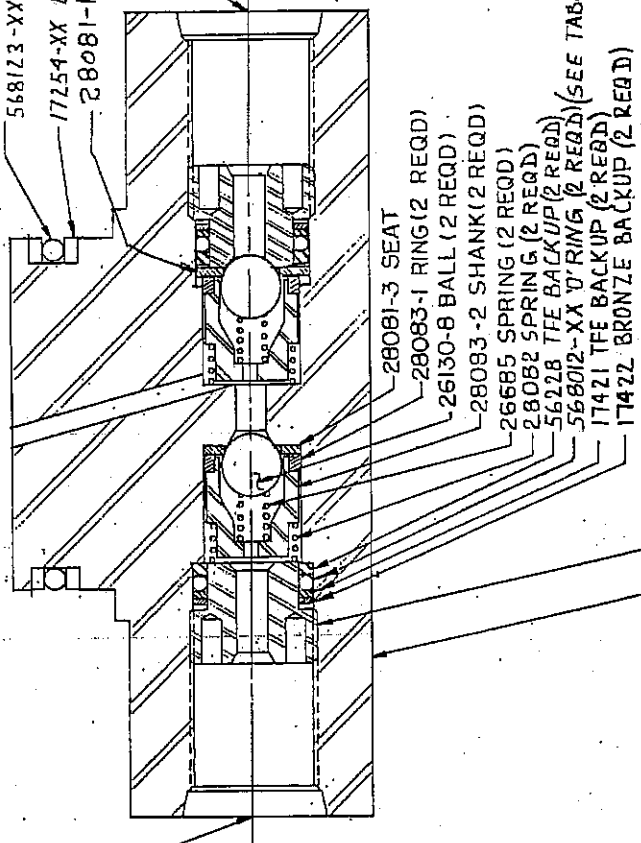


To preclude any problems with seal kits, two of the smaller O.D. seats, 28081-3, and one of the new large inlet check seats, 28081-1, will be included in all kits.

THIS DRAWING EXHIBITS A CONFIDENTIAL PROPRIETARY DESIGN. ALL RIGHTS FOR REPRODUCTION OR PATENTING ARE RESERVED BY THE HASKEL ENGINEERING & SUPPLY CO.

53632

DASH NO.	END CAP	O' RING	O' RING	BACK-UP	USAGE
53632-15	54068-15	568012-22	568123-22	17254-15	-15 £-32 RATIO
53632-30	54068-30	568012-22	568117-22	17254-30	-30 £-62 RATIO
53632-15X	54068-15	568012-17	568123-17	17254-15	-15 £-32 RATIO
53632-30X	54068-30	568012-17	568117-17	17254-30	-30 £-62 RATIO



OUTLET PORT
3/8" SAE (JIC)
OR
1/4" SUPERPRESSURE

54067 SEAT (2 REQD) Δ
54068-XX END CAP
(SEE TABULATION)

28081-3 SEAT
28083-1 RING (2 REQD)
26130-8 BALL (2 REQD)
28093-2 SHANK (2 REQD)
26685 SPRING (2 REQD)
28082 SPRING (2 REQD)
56228 TFE BACKUP (2 REQD)
568012-XX O'RING (2 REQD) (SEE TABULATION)
17421 TFE BACKUP (2 REQD)
17422 BRONZE BACKUP (2 REQD)

REVISIONS

1. MUST BE REWORKED	2. USE EXISTING PART AS IS	3. NOW SHOP PRACTICE	4. RECORD CHANGE	
DISPOSITION OTHER THAN ABOVE TO BE DESCRIBED IN DESCRIPTION COLUMN	DATE	DISP.	BY	APPR.
A ADDED 568117-XX 568123-XX £ 17254-XX	10/25/81	1	JEB	RJC
B ADDED 28081-1 SEAT (28081-3 SEAT (1) WAS (2) REQD)	11/83	2	JAN	OBH
C ADDED 53632-75, -75X £-150	11/87	4	JEB	RJC
D 17421 (2 REQD) WAS 17421 (4 REQD) 17422 (2 REQD) WAS 17422 (4 REQD) ADDED 56228.	11-23-88	1	LA	DAH

568111-XX O' RING (SEE TABULATION)
568117-XX O' RING (SEE TABULATION)
568123-XX O' RING (SEE TABULATION)

17254-XX BACK-UP (SEE TABULATION) (2 REQD)
28081-1 SEAT

INLET PORT
3/8" SAE (JIC)
OR
1/4" SUPERPRESSURE

DASH NO	END CAP	O' RING	O RING	BACK-UP	USAGE
53632-15	54068-15	568012-22	568123-22	17254-15	-15 £-32 RATIO
53632-30	54068-30	568012-22	568117-22	17254-30	-30 £-62 RATIO
53632-15X	54068-15	568012-17	568123-17	17254-15	-15 £-32 RATIO Δ
53632-30X	54068-30	568012-17	568117-17	17254-30	-30 £-62 RATIO Δ
53632-75	54068-75	568012-22	568111-22	17254-75	-75 RATIO
53632-75X	54068-75	568012-17	568111-17	17254-75	-75 RATIO Δ
53632-150	54068-150	568012-22	568111-22	17254-75	-152 RATIO

HASKEL INCORPORATED 100 E. GRAHAM PLACE BURBANK, CALIFORNIA 91502 - U.S.A.	
TITLE: END CAP ASSY GAS BOOSTER	
DRAWN: J-BARLOW	527-83
CHECKED:	
APPR.:	
MATERIAL:	NOTED
TREATMENT:	
FINISH:	
SIZE: CODE IDENT. NO. B 81400	DWG. NO. 53632
SCALE: 2:1	WT.
	SHEET 1 OF 1

Δ FOR OXYGEN SERVICE.
 Δ USE ASSEMBLY TOOL 16675.